

THE PLAGUE BLACK DEATH



The Plague, known today as the Black Death or the bubonic plague, was a plague that lasted for at least three years from 1347 to 1350. The plague had severe symptoms such as convulsions, vomiting, and fever. The most recognizable sign, though, were swellings called buboes, appearing on the skin as dark spots and paired often with swelling lymph nodes. Many described the disease as horrific and terrifying. The Black Plague spread at an alarming rate throughout Europe and killed roughly one third of the population. An estimated twenty-five million people succumbed to the Black Death across Europe, North Africa, and West Asia.

Researchers believe that the deadly disease came from Asia through traders. These traders most likely brought flea-infested rats on their merchant ships, and these rats carried the disease. The fleas were the primary cause, as they could easily travel and infest clothing, or homes of human beings. Many believe the plague originated in China. The lower class was the most vulnerable due to their living conditions, mostly because hygiene wasn't a top priority for many people in the 14th century. Plague victims were buried by the hundreds during the peak of the epidemic, and the disease sparked questions of religious targeting in different communities. Christians believed that the Black Death was a punishment from God for their sins.

The implications of the Black Plague were significant. As a result of the sharp and sudden decrease in the population, there was a shortage of laborers, and the high demand of workers could not be met. The manor system, an essential part of the feudal society in which many dwelled, therefore collapsed. Wages skyrocketed due to the lack of workers, and there was a substantial decline in trade.

It took decades, possibly longer, for Europe's population to recover from the frighteningly contagious plague. Overall, by 1400 when the plague was finished sweeping through Europe, tens of millions were dead and social classes were thrown into chaos.

WHILE YOU'RE READING...

MARK WITH SYMBOLS

! when you find something interesting.

? when you are unsure or confused by something.

***** when you find something important.

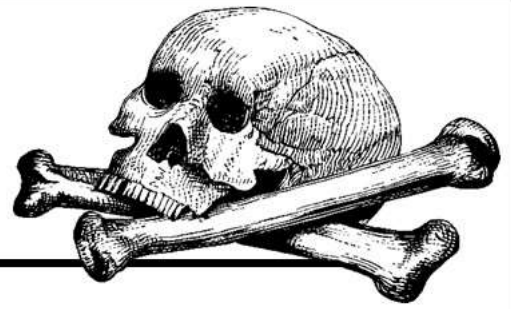
HIGHLIGHT WITH COLORS

yellow power words or key terms

green key phrases and definitions

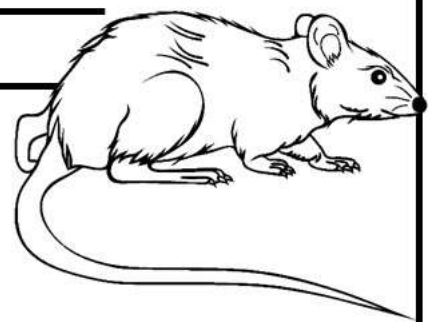


THE PLAGUE BLACK DEATH



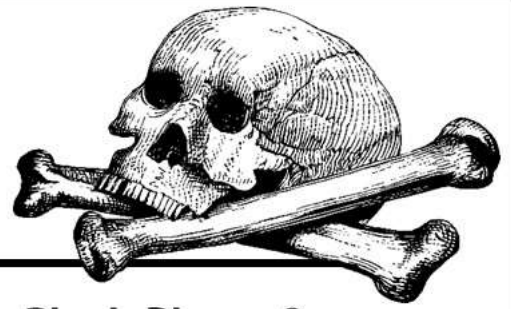
Questions I have while reading:

Summary of what I have read:



THE PLAGUE

BLACK DEATH



Question 1: What were the main symptoms of the Black Plague?

Question 2: How did the Black Plague reach Europe and create an epidemic?

Question 3: How did the Black Plague affect Europe?

