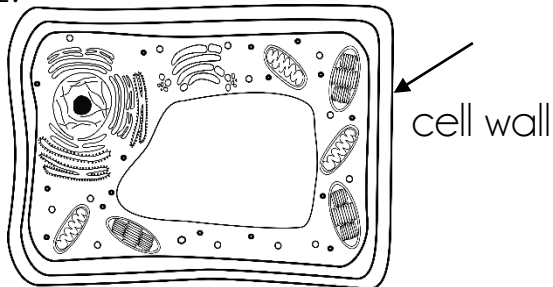


Plant Cell, Animal Cell, or Both?

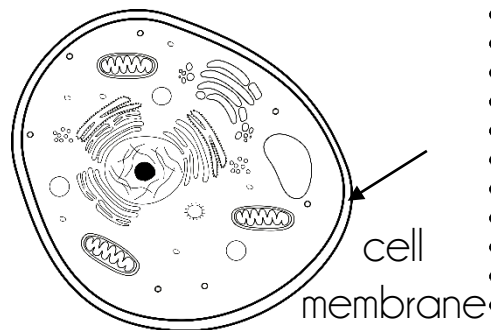
Name _____ Date: _____

Directions: Determine if the cell organelles are found only in plant cells, only in animal cells, or are found in both types of cells.

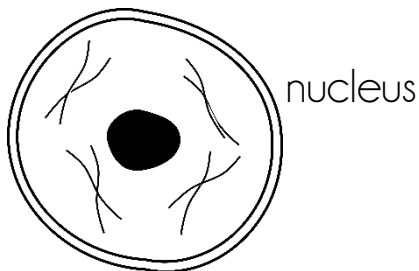
1.



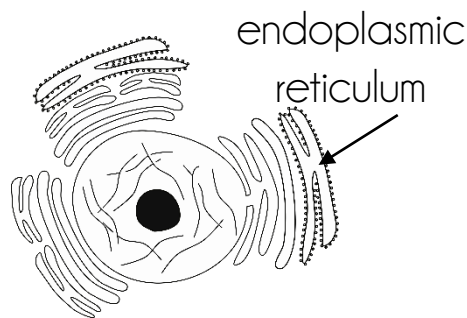
2.



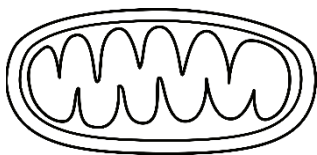
3.



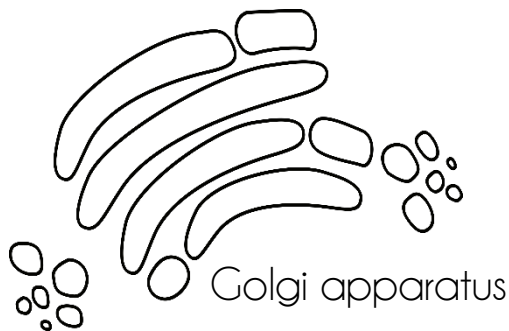
4.



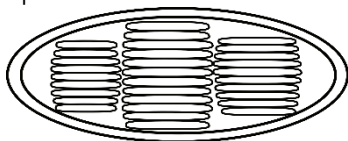
5. mitochondrion



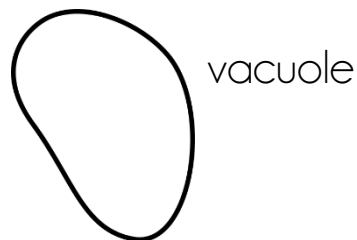
6.



7. chloroplasts



8.

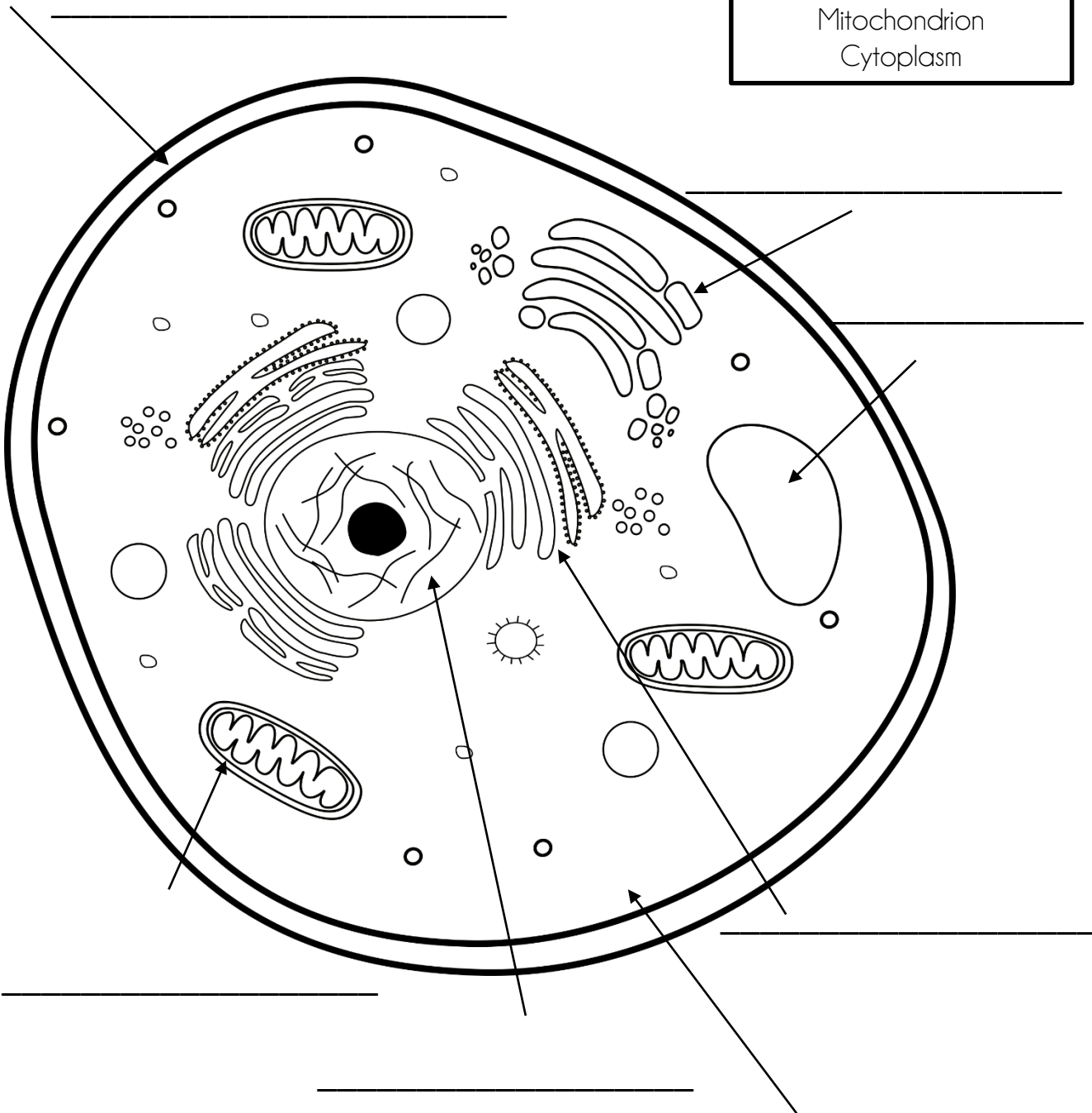


Parts of an Animal Cell

Name: _____ Date: _____

Directions: Label each part of the animal cell shown.

Cell membrane
Nucleus
Golgi apparatus
Endoplasmic reticulum
Vacuole
Mitochondrion
Cytoplasm

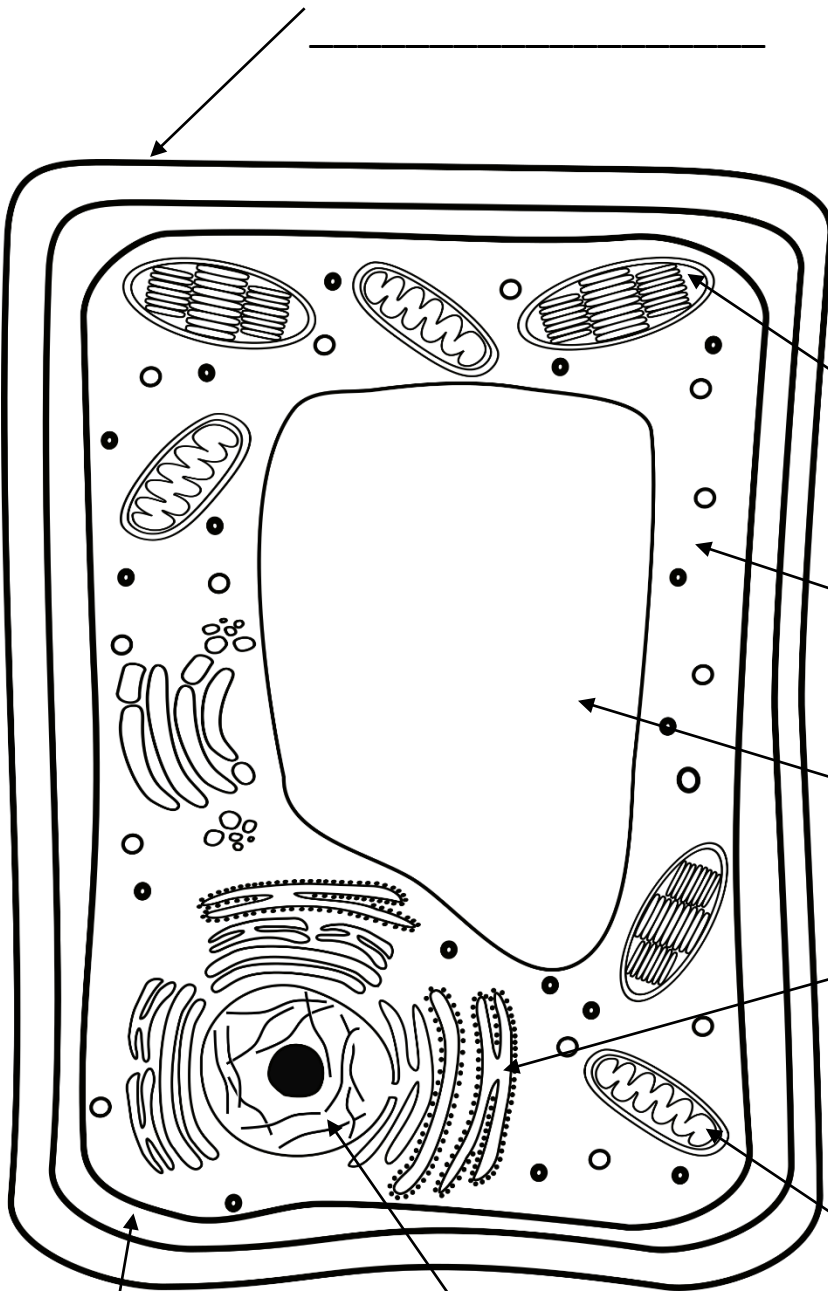


Parts of a Plant Cell

Name: _____ Date: _____

Directions: Label each part of the plant cell shown.

Cell wall
Cell membrane
Nucleus
Golgi apparatus
Endoplasmic reticulum
Vacuole
Chloroplasts
Mitochondrion
Cytoplasm



Name that Organelle

Name: _____ Date: _____

Directions: Fill in the name of the organelle that matches the function.

Organelle	Structure/Function
	This is the brain of the cell. It controls the cell's activities.
	This is the jelly-like substance that holds and protects the cell's organelles.
	This is a large sac that holds food, water, and waste.
	These structures are known as the powerhouse of the cell because they release energy.
	This green structure is found only in plant cells and uses energy from the sun to make food.
	This structure packages and moves proteins through the cell.
	This is the outer layer of an animal cell, and it controls movement in and out of the cell.
	There are two types of this structure: a smooth and a rough one.
	These organelles build or synthesize proteins for the cell.
	This is the outer layer of a plant cell. It supports the cell.

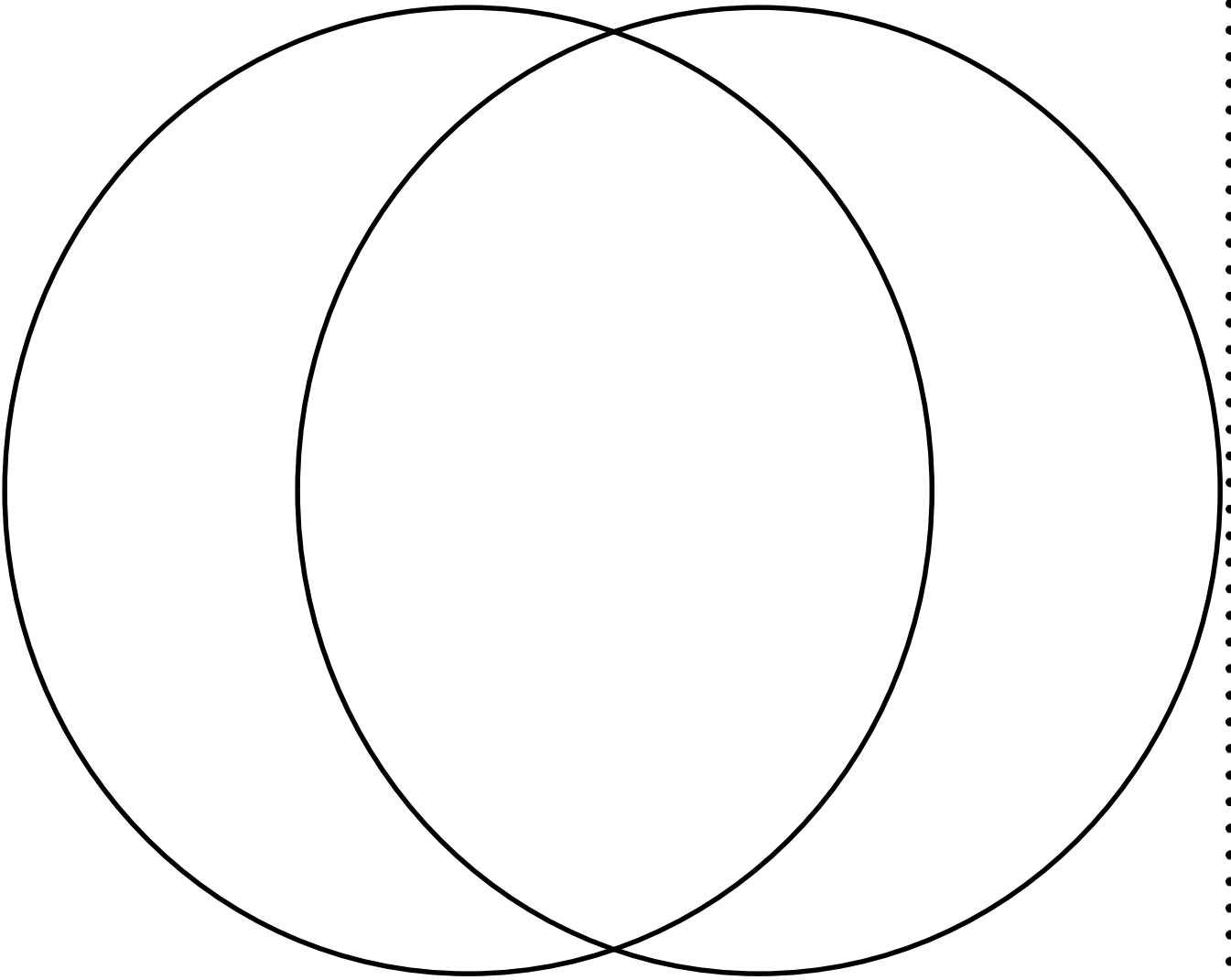
Cells Study Guide

Compare and contrast animal and plant cells using the Venn diagram.

Animal Cells

Both

Plant Cells



What structures does a plant cell have that an animal cell does not?

Fill in the blank:

All living things are made of _____.